

MINGTAI
INTELLIGENT

YOHOMA



COMPANY INTRODUCTION 企业介绍



专注于多轴数控加工中心、机器人及机器人系统的研发、制造、销售及技术服务

深圳市铭泰智能科技有限公司（原深圳市铭泰传动元件有限公司）是一家为制造加工行业提供整体解决方案的“国家级高新技术企业”。专注于多轴数控加工中心、机器人及机器人系统的研发、制造、销售及技术服务，致力于以高品质走向高端市场打造“世界级中国品牌”。同时也是日本哈默纳科（Harmonic Drive）和纳博特斯克（Nabtesco）KSS丝杠在中国区域销售一级代理最佳合作伙伴。自2009年成立以来，始终坚持以“紧贴市场、持续改进、技术创新、科学管理、回报社会”的核心价值理念，努力打造业内标杆企业。

Shenzhen Mingtai Intelligent Technology Co., Ltd. (formerly Shenzhen Mingtai Transmission Components Co., Ltd.) is a "national high-tech enterprise" that provides overall solutions for the manufacturing and processing industries. Focus on the research and development, manufacturing, sales and technical services of multi-axis CNC machining centers, robots and robotic systems, and are committed to building a "world-class Chinese brand" with high quality to the high-end market. At the same time, it is also the best partner of Japan's Harmonic Drive and Nabtesco, KSS lead screw sales in China. Since its establishment in 2009, it has always adhered to the core value concept of "close to the market, continuous improvement, technological innovation, scientific management, and return to society", and strive to build a benchmark enterprise in the industry.

YOHOMA

主要生产、销售YOHOMA五轴转台，解决工业机加工难题，降低成本，协助企业解决问题并为企业服务。关键核心齿轮部件质保三年，其它部件质保一年。24小时内处理客户售后问题（广东省内）。

It mainly produces and sells YOHOMA five-axis turntables to solve industrial machining problems, reduce costs, and assist enterprises in solving problems and serving enterprises. The key core gear parts are guaranteed for three years, and the other parts are guaranteed for one year. Deal with customer after-sales problems within 24 hours (in Guangdong Province).



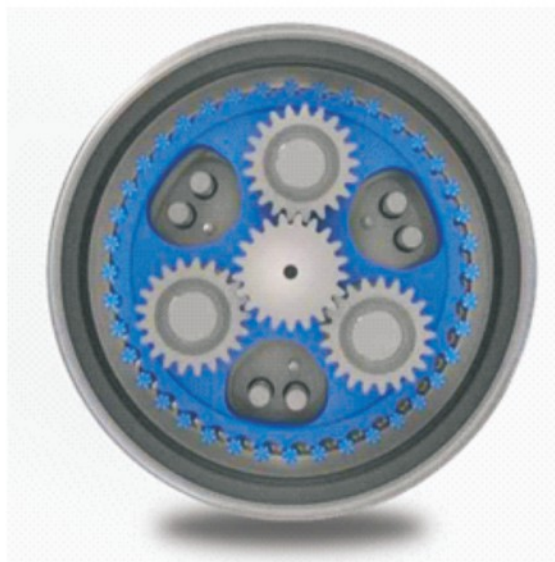
Harmonic Drive 是一种特殊的谐波齿轮传动。可应用于机器人、半导体制造设备、FA设备等广泛应用。另外，在承载人类梦想的宇宙领域，Harmonic Drive也大有用武之地。此外，在多种需求进行精密移动的机电一体化产品，如光学测量器械、医疗器械、印刷设备等产业及技术领域发挥重要作用。

Harmonic Drive is a special harmonic gear drive. It can be applied to a wide range of applications such as robots, semiconductor manufacturing equipment, and FA equipment. In addition, Harmonic Drive is also very useful in the universe that carries human dreams. In addition, it plays an important role in various industries and technical fields such as optical measuring equipment, medical equipment, and printing equipment that require precise movement of mechatronics products.



纳博特斯克是世界上最大的精密摆线针轮减速机制造商，并生产高性能减速机、中空轴减速机以及单轴伺服执行器和控制器。我们的精密设备具有高扭矩、高刚性和高耐过载冲击荷载能力的同时，兼有高精神和非常低的回程间隙。纳博特斯克致力于成为“世界领先的航天航空、陆地以及海运设备的运动控制系统和相关零部件的专家”。纳博特斯克在任何需要精密控制的领域都是您高品质和优良性能的优先选择。

Harmonic Drive is a special harmonic gear drive. It can be applied to a wide range of applications such as robots, semiconductor manufacturing equipment, and FA equipment. In addition, Harmonic Drive is also very useful in the universe that carries human dreams. In addition, it plays an important role in various industries and technical fields such as optical measuring equipment, medical equipment, and printing equipment that require precise movement of mechatronics products.

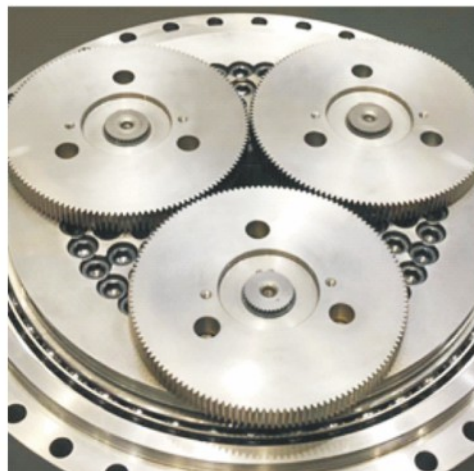


日本发明

零背隙
滚动传递无磨损

JAPANESE INVENTION

Zero backlash
Rolling transfer without wear

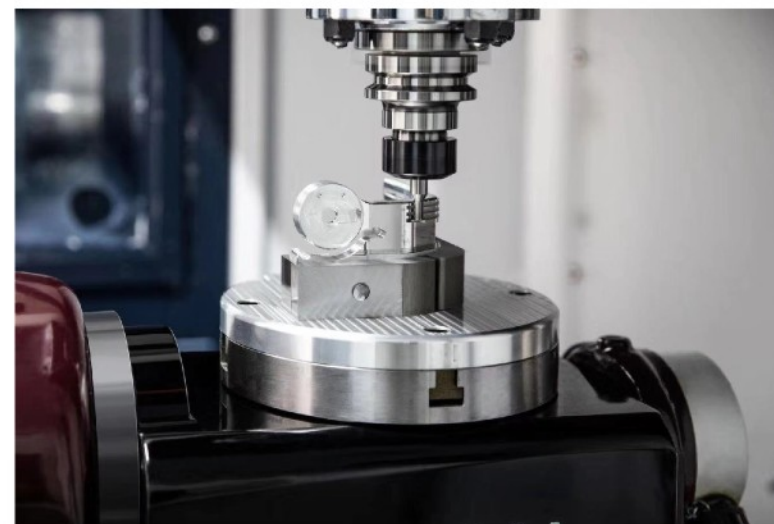


日本制造

高精度
高效率
高刚性

MADE IN JAPAN

High Precision
High Efficiency
High Rigidity

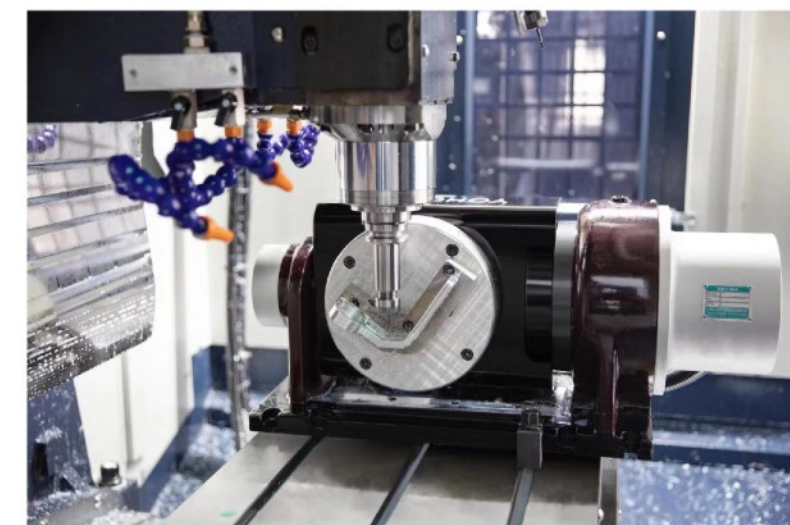


生产, 销售 YOHOMA 五轴转台解决工业机加工难题, 降低成本, 协助企业解决问题并为企业服务

Production and sales of YOHOMA five-axis turntable to solve industrial machining problems, reduce costs, assist enterprises in solving problems and serve enterprises

提高品质, 提高合格率, 解放人工!

Improve quality, increase qualification rate, and liberate labor!



转台可以通过精准的定位, 扩大原本的加工空间, 不仅能提高加工的效率, 而且还能减少机器的闲置。

The turntable can expand the original processing space through precise positioning, which not only improves the processing efficiency, but also reduces the idleness of the machine.



提供售前技术支持, 售后维护, 细节决定成败, 细节成就完美。
使用三坐标仪器进行精度标定及调整, 保证质量。
YHM高防护系列 (定制) YOHEMA五轴IP68防护等级,
可以浸泡液体加工。

Provide pre-sales technical support, after-sales maintenance,
details determine success or failure, and details make perfect.
Use a three-coordinate instrument for precision calibration
and adjustment to ensure quality.

YHM high protection series (customized) YOHEMA five-axis
IP68 protection level, can be immersed in liquid processing.

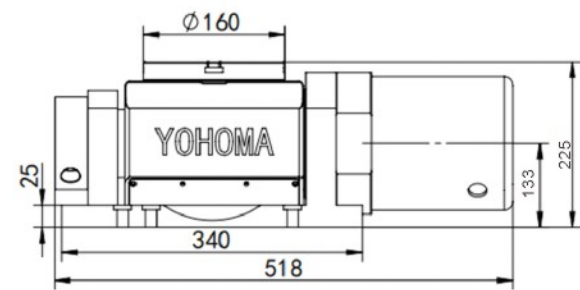


YHM-160H五轴转台特点

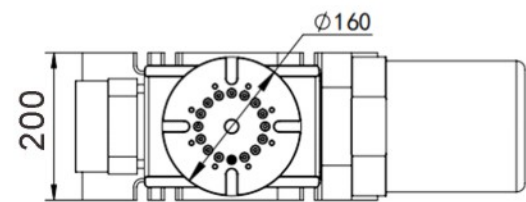
- *使用NSK高精度交叉滚柱轴承
- *运用日本原装超精密消隙齿轮传动结构
- *高转矩、高精度、高刚性
- *可装配在钻攻机、650、850机床上
- *可配宝元、新代、三菱、法那科、西门子等系统
- *适用于无人机零件、医疗配件、5G通讯散热器等各类铝件加工
- *完全解决加工工件需多次装夹的弊端，提升加工效率及品质

YHM-160H five-axis turntable features

- *Use NSK high-precision cross roller bearings
- *Using Japanese original ultra-precision anti-backlash gear transmission structure
- *High torque, high precision, high rigidity
- *Can be assembled on drilling and tapping machines, 650, 850 machine tools
- *Can be equipped with Baoyuan, New Generation, Mitsubishi, Fanuc, Siemens and other systems
- *Suitable for processing various aluminum parts such as drone parts, medical accessories, 5G communication radiators, etc.
- *Completely solve the disadvantages of multiple clamping of processed parts, improve processing efficiency and quality



规格/型号 Specification/Model	单位unit	YHM-160H
转台盘面直径 Diameter of turntable surface	φmm	φ160
工作台高度 Height of worktable	水平 Level	mm
225		
中心高度 Center height	90°	mm
133		
中心孔直径 Center hole diameter	mm	15
倾斜角度 slope	deg	±106°



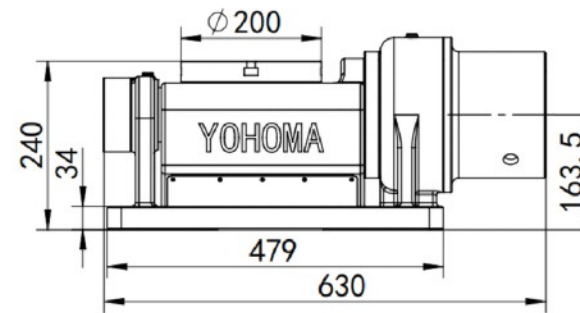
轴向Axial	单位unit	旋转轴 Axis of rotation	倾斜轴 Tilt axis
最小设定单位 Minimum setting unit	deg	0.001	0.001
分度精度Indexing accuracy	sec	30"	30"
重复定位精度Repeatability	sec	3"	5"
输出承载扭矩 Output load torque	选配电机Optional motor	-	400w
	连续/最大扭矩 Continuous/maximum torque	Nm	61/87
750w/1KW			153/882
总减速比 Total reduction ratio	-	1:81	1:121
容许最高转速 Allowable maximum speed	r.p.n	48/37	50/25
最大工作负载 Maximum workload	0°	kg	46
	0°~90°	kg	35

YHM-200五轴转台特点

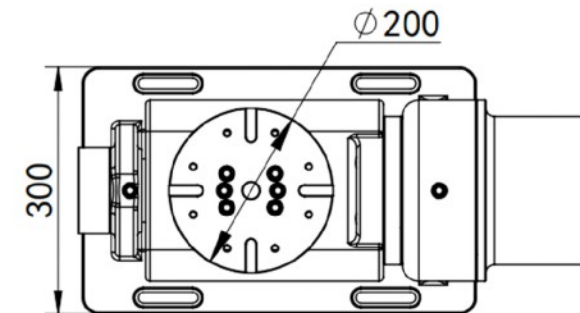
- *使用NSK高精度交叉滚柱轴承
- *运用日本原装超精密消隙齿轮传动结构
- *高转矩、高精度、高刚性
- *可装配钻攻机Z轴加高、650、850机床上
- *可配宝元、新代、三菱、西门子等系统
- *适用于无人机零件、医疗器械零件、振动盘等各类小五金铝件加工
- *完全解决加工工件需多次装夹的弊端，提升加工效率及品质

YHM-200 five-axis turntable features

- *Use NSK high-precision cross roller bearings
- *Using Japanese original ultra-precision anti-backlash gear transmission structure
- *High torque, high precision, high rigidity
- *Can be equipped with drilling and tapping machine Z axis heightening, 650, 850 machine tools
- *Can be equipped with Baoyuan, New Generation, Mitsubishi, Siemens and other systems
- *Suitable for the processing of various small hardware aluminum parts such as drone parts, medical equipment parts, vibrating plates, etc.
- *Completely solve the disadvantages of multiple clamping of processed parts, improve processing efficiency and quality



规格/型号 Specification/Model	单位unit	YHM-200
转台盘面直径 Diameter of turntable surface	φmm	φ200
工作台高度 Height of worktable	水平 Level	mm
240		
中心高度 Center height	90°	mm
163.5		
中心孔直径 Center hole diameter	mm	20
倾斜角度 slope	deg	±120°



轴向Axial	单位unit	旋转轴 Axis of rotation	倾斜轴 Tilt axis
最小设定单位 Minimum setting unit	deg	0.001	0.001
分度精度Indexing accuracy	sec	23"	23"
重复定位精度Repeatability	sec	5"	5"
输出承载扭矩 Output load torque	选配电机Optional motor	-	400w
	连续/最大扭矩 Continuous/maximum torque	Nm	153/882
750w			377/1666
总减速比 Total reduction ratio	-	1:121	1:121
容许最高转速 Allowable maximum speed	r.p.n	25	25
最大工作负载 Maximum workload	0°	kg	80
	0°~90°	kg	40



YHM-250五轴转台特点

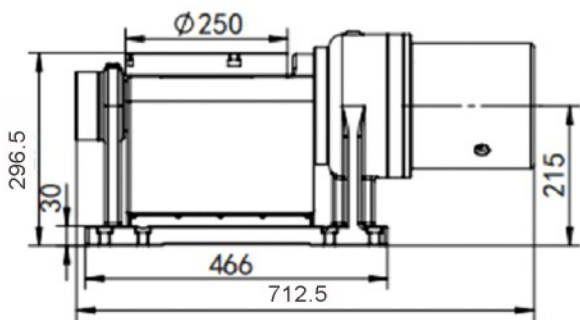
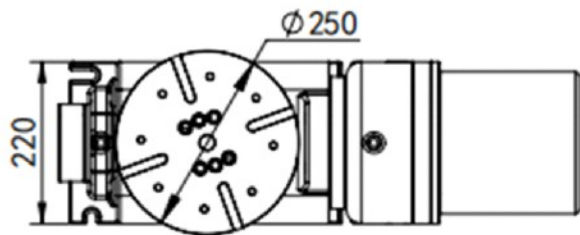
- *使用NSK高精度交叉滚柱轴承
- *运用日本原装超精密消隙齿轮传动结构
- *高转矩、高精度、高刚性
- *可装配850及以上机床
- *可配宝元、新代、三菱、法那科、西门子等系统
- *适用于大振动盘精加工、自行车配件加工、钢件精加工等
- *完全解决加工件需多次装夹的弊端，提升加工效率及品质

YHM-250 five-axis turntable features

- *Use NSK high-precision cross roller bearings
- *Using Japanese original ultra-precision anti-backlash gear transmission structure
- *High torque, high precision, high rigidity
- *Can be equipped with 850 and above machine tools
- *Can be equipped with Baoyuan, New Generation, Mitsubishi, Fanuc, Siemens and other systems
- *Suitable for large vibrating plate finishing, bicycle parts processing, steel finishing, etc.
- *Completely solve the disadvantages of multiple clamping of processed parts, improve processing efficiency and quality

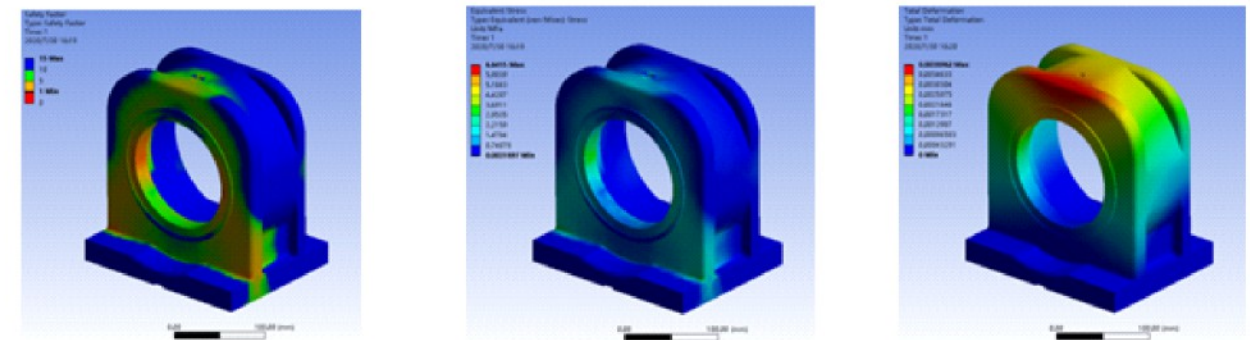
规格/型号 Specification/Model	单位unit	YHM-250
转台盘面直径 Diameter of turntable surface	φmm	φ250
工作台高度 Height of worktable	水平 Level	mm
中心高度 Center height	90°	mm
中心孔直径 Center hole diameter	mm	20
倾斜角度 slope	deg	±120°

轴向Axial	单位unit	旋转轴 Axis of rotation	倾斜轴 Tilt axis
最小设定单位 Minimum setting unit	deg	0.001	0.001
分度精度Indexing accuracy	sec	23"	23"
重复定位精度Repeatability	sec	5"	5"
输出承载扭矩 Output load torque	选配电机Optional motor	-	1Kw
	连续/最大扭矩 Continuous/maximum torque	Nm	882/1764
总减速比 Total reduction ratio	-	1:121	1:121
容许最高转速 Allowable maximum speed	r.p.n	60/25	40/25
最大工作负载 Maximum workload	0°	kg	100
	0°~90°	kg	65



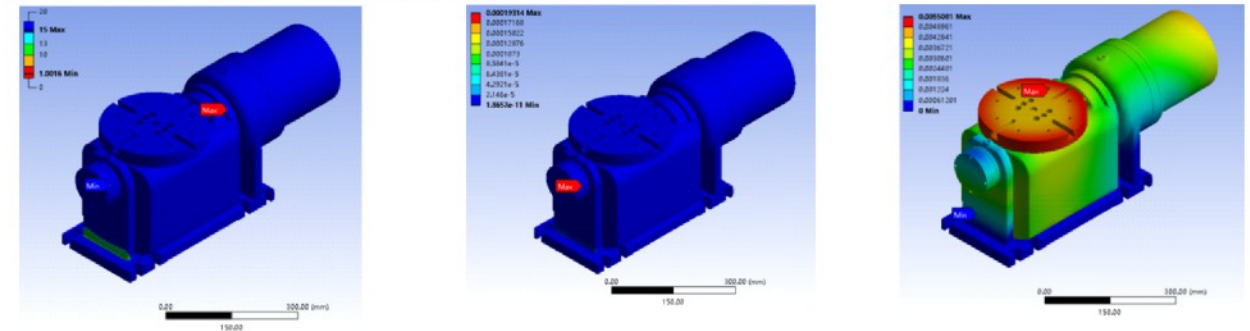
YOHOMA数控四轴转台仿真模拟结果

Simulation results of YOHOMA CNC four-axis turntable



YOHOMA数控五轴转台仿真模拟结果

Simulation results of YOHOMA CNC five-axis turntable



安全系数Safety factor

应力分析Stress Analysis

位移Displacement

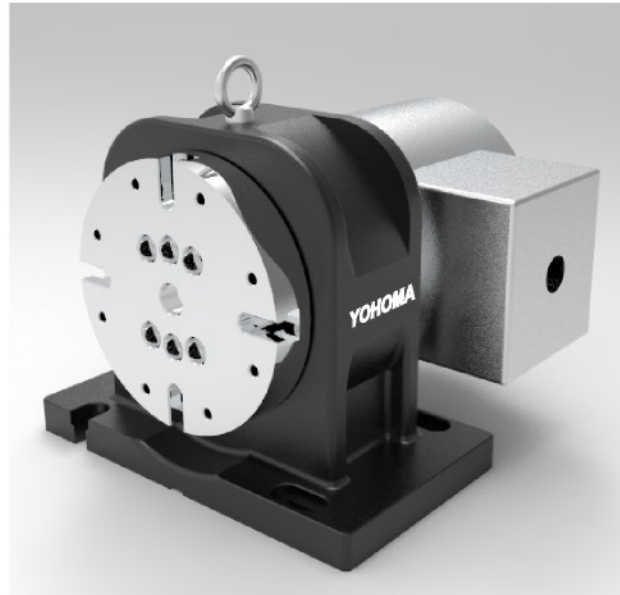
精度的规格

Accuracy specifications

NO	检查项目	测定方法	YHM-120	YHM-160	YHM-200	YHM-250
1	旋转台盘面与底面平行度		0.01	0.01	0.015	0.02
2	旋转台盘面跳动		0.01	0.01	0.015	0.015
3	主轴中心孔径向跳动		0.01	0.01	0.015	0.015
4	0-90°角度误差		0.01	0.01	0.015	0.02
5	旋转轴分度精度	—	16sec	16sec	23sec	23sec
6	旋转轴重复定位精度	—	3sec	3sec	5sec	5sec
7	倾斜轴分度精度	累计	16sec	23sec	23sec	23sec
8	倾斜轴重复定位精度	累计	5sec	5sec	7sec	7sec

YOHOMA四轴转台YHM-180

YOHOMA four-axis turntable YM-180

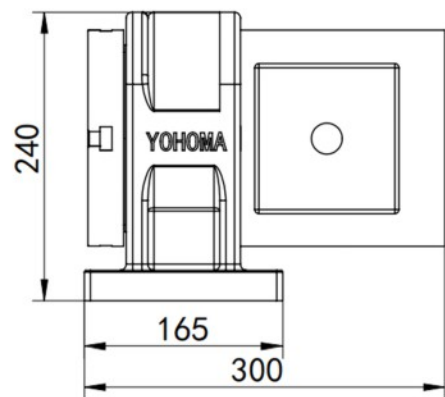
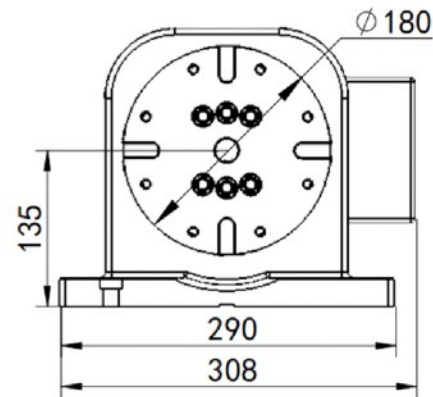


YHM-180四轴转台特点

- *采用大型高精度交叉滚柱轴承
- *采用日本原装超精密消隙齿轮传动结构
- *高转矩、高精度、高刚性
- *电机背后式配置，充分保留Y轴有效行程
- *主要应用于铝件加工

Features of YHM-180 four-axis turntable

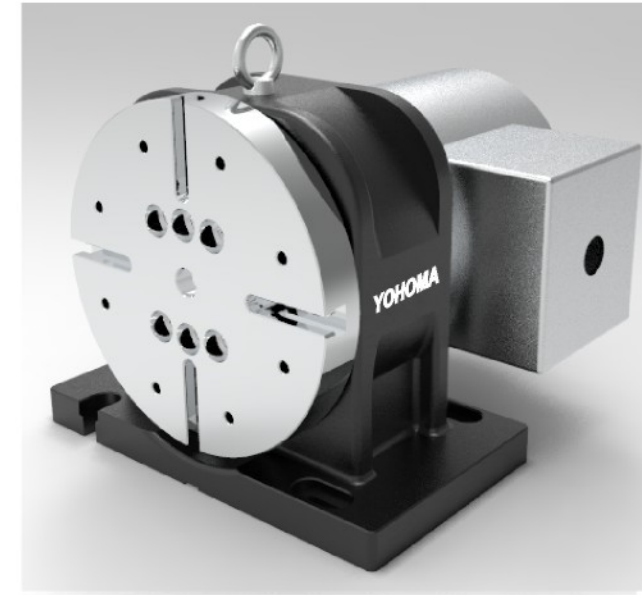
- *Using large high-precision cross roller bearings
- *Using Japanese original ultra-precision anti-backlash gear transmission structure
- *High torque, high precision, high rigidity
- *Back configuration of the motor to fully retain the effective stroke of the Y axis
- *Mainly used in aluminum processing



规格/型号 Specification/Model		单位unit	YHM-180
转台盘面直径 Diameter of turntable surface		φmm	Φ180
工作台高度 Height of worktable	水平 Level	mm	240
中心高度 Center height	90°	mm	135
中心孔直径 Center hole diameter		mm	20
最小设定单位 Minimum setting unit		deg	0.001
分度精度Indexing accuracy		sec	23"
重复定位精度Repeatability		sec	5"
输出承载扭矩 Output load torque	选配电机Optional motor	-	1KW
	连续/最大扭矩 Continuous/maximum torque	Nm	377/1666
总减速比 Total reduction ratio		-	1:121
容许最高转速 Allowable maximum speed		r.p.n	25
容许力矩 Allowable moment			800

YOHOMA四轴转台YHM-260

YOHOMA four-axis turntable YM-260

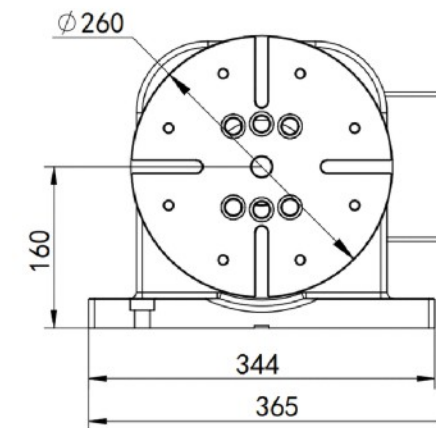
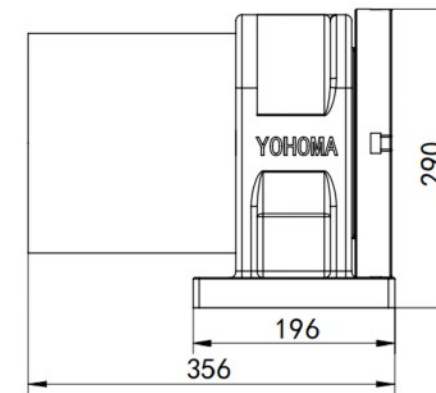


YHM-260四轴转台特点

- *采用大型高精度交叉滚柱轴承
- *采用日本原装超精密消隙齿轮传动结构
- *高转矩、高精度、高刚性
- *电机背后式配置，充分保留Y轴有效行程
- *主要应用于铝件加工

Features of YHM-260 four-axis turntable

- *Using large high-precision cross roller bearings
- *Using Japanese original ultra-precision anti-backlash gear transmission structure
- *High torque, high precision, high rigidity
- *Back configuration of the motor to fully retain the effective stroke of the Y axis
- *Mainly used in aluminum processing



规格/型号 Specification/Model		单位unit	YHM-260
转台盘面直径 Diameter of turntable surface		φmm	Φ260
工作台高度 Height of worktable	水平 Level	mm	290
中心高度 Center height	90°	mm	160
中心孔直径 Center hole diameter		mm	40
最小设定单位 Minimum setting unit		deg	0.001
分度精度Indexing accuracy		sec	23"
重复定位精度Repeatability		sec	5"
输出承载扭矩 Output load torque	选配电机Optional motor	-	1.5KW
	连续/最大扭矩 Continuous/maximum torque	Nm	1666/3332
总减速比 Total reduction ratio		-	1:121
容许最高转速 Allowable maximum speed		r.p.n	25
容许力矩 Allowable moment			1500